



## ORIGINAL ARTICLE

# Continuous Aspiration Mechanical Thrombectomy for the management of intermediate- and high-risk pulmonary embolism: Data from the first cohort in Portugal



Rita Calé<sup>a,\*</sup>, Ana Rita Pereira<sup>a,1</sup>, Filipa Ferreira<sup>a</sup>, Sofia Alegria<sup>a</sup>, Gonçalo Morgado<sup>a</sup>, Cristina Martins<sup>a</sup>, Melanie Ferreira<sup>b</sup>, Ana Gomes<sup>b</sup>, Tiago Judas<sup>b</sup>, Filipe Gonzalez<sup>c</sup>, Corinna Lohmann<sup>c</sup>, Débora Repolho<sup>a</sup>, Pedro Santos<sup>a</sup>, Ernesto Pereira<sup>a,d</sup>, Maria José Loureiro<sup>a</sup>, Helder Pereira<sup>a,e</sup>

<sup>a</sup> Cardiology Department, Hospital Garcia de Orta, Almada, Portugal

<sup>b</sup> Internal Medicine Department, Hospital Garcia de Orta, Almada, Portugal

<sup>c</sup> Intensive Medicine Department, Hospital Garcia de Orta, Almada, Portugal

<sup>d</sup> Escola Superior de Saúde da Cruz Vermelha Portuguesa, Lisboa, Portugal

<sup>e</sup> Faculdade de Medicina de Lisboa, Lisboa, Portugal

Received 6 December 2020; accepted 7 April 2021

Available online 27 May 2022

## KEYWORDS

Acute pulmonary embolism;  
Catheter-directed treatment;  
Thrombectomy;  
Pulmonary artery pressure

## Abstract

**Introduction:** This study describes the experience of a reference center using continuous aspiration mechanical thrombectomy for acute high- and intermediate-high-risk pulmonary embolism (PE).

**Methods:** Twenty-nine consecutive patients with acute central PE (48.3% high-risk PE; 82.8% in class  $\geq$ III from the original Pulmonary Embolism Severity Index score; median Charlson Comorbidity Index of 4) were treated with the Indigo<sup>®</sup> Mechanical Thrombectomy System between March 2018 and March 2020. Technical success was defined as successful placement of the device and initiation of aspiration thrombectomy. Clinical success was defined as any improvement in hemodynamic and/or oxygenation parameters, pulmonary hypertension or right heart strain at 48 hours, and survival to hospital discharge. Safety was defined as freedom from severe adverse events potentially related to the procedure. Three-month follow-up results were collected.

\* Corresponding author.

E-mail address: [ritacale@hotmail.com](mailto:ritacale@hotmail.com) (R. Calé).

<sup>1</sup> Equal contributors.

**Results:** Technical success was 96.6%. Miller index and systolic pulmonary arterial pressure were significantly reduced after the procedure ( $-5.5 \pm 3.0$ , and  $-10.2 \pm 11.5$  mmHg, respectively, both  $p < 0.001$ ). There was a significant improvement in mean  $paO_2/FiO_2$  ratio ( $+77.1 \pm 103.2$ ;  $p = 0.001$ ), shock index ( $-0.4 \pm 0.4$ ;  $p < 0.001$ ), need for aminergic support at 48 h after the procedure ( $-75.0\%$ ,  $p = 0.006$ ) and improvement in right ventricular function in 66.6% ( $p = 0.008$ ). Clinical success was 75.9%. Severe adverse event rate was 10.3%: two deaths during the procedure and one pulmonary macroembolization during device progression. In-hospital and three-month survival rates were 82.8% and 72.4%, respectively.

**Conclusions:** Aspiration thrombectomy for acute high- and intermediate-high-risk PE is feasible with a high technical and clinical success rate. Nevertheless, all-cause mortality is still high, probably related to the baseline high-risk features of the studied population and associated comorbidities.

© 2022 Sociedade Portuguesa de Cardiologia. Published by Elsevier España, S.L.U. This is an open access article under the CC BY-NC-ND license (<http://creativecommons.org/licenses/by-nc-nd/4.0/>).

## PALAVRAS-CHAVE

Embolia pulmonar aguda;  
Tratamento dirigido por cateter;  
Trombectomia;  
Pressão da artéria pulmonar

## Trombectomia mecânica de aspiração contínua para o tratamento da embolia pulmonar de risco intermédio e alto: dados da primeira coorte em Portugal

### Resumo

**Introdução:** Este estudo descreve a experiência de um centro de referência no uso de trombectomia mecânica de aspiração contínua na embolia pulmonar (EP) aguda de risco alto e intermédio-alto.

**Métodos:** Foram tratados 29 doentes consecutivos com EP aguda central (48,3% alto risco; 82,8% classe  $\geq III$  do score PESI; mediana 4 do índice de comorbilidades de Charlson) com o sistema de trombectomia mecânica Indigo entre março/2018 e março/2020. Definiu-se sucesso técnico como colocação bem-sucedida do dispositivo e início da trombectomia. Definiu-se sucesso clínico como melhoria hemodinâmica, da oxigenação, hipertensão pulmonar e/ou da sobrecarga cardíaca direita às 48 horas; e sobrevivência hospitalar. Definiu-se segurança como ausência de eventos adversos graves relacionados com o procedimento. Registou-se seguimento clínico a três meses.

**Resultados:** O sucesso técnico foi 96,6%. O índice de Miller e a pressão arterial pulmonar sistólica reduziram-se significativamente ( $-5,5 \pm 3,0$  e  $-10,2 \pm 11,5$  mmHg, respetivamente,  $p < 0,001$ ). Ocorreu uma melhoria significativa da  $paO_2/FiO_2$  ( $+77,1 \pm 103,2$ ;  $p = 0,001$ ), índice de choque ( $-0,4 \pm 0,4$ ;  $p < 0,001$ ), necessidade de suporte aminérgico ( $-75,0\%$ ,  $p = 0,006$ ) e melhoria da função ventricular direita em 66,6% ( $p = 0,008$ ). O sucesso clínico foi 75,9%. A taxa de eventos adversos graves foi 10,3%: duas mortes intraprocedimento e uma macroembolização pulmonar durante a progressão do dispositivo. A taxa de sobrevida intra-hospitalar e aos três meses foi 82,8% e 72,4%, respetivamente.

**Conclusões:** É possível proceder a trombectomia de aspiração com níveis elevados de sucesso técnico e clínico. No entanto, a mortalidade por todas as causas permanece elevada, provavelmente relacionada com as características basais de alto risco da população estudada e suas comorbilidades.

© 2022 Sociedade Portuguesa de Cardiologia. Publicado por Elsevier España, S.L.U. Este é um artigo Open Access sob uma licença CC BY-NC-ND (<http://creativecommons.org/licenses/by-nc-nd/4.0/>).

## Introduction

Pulmonary embolism (PE) remains a major worldwide health issue. It is the most common cause of cardiovascular death after myocardial infarction and stroke and the leading preventable cause of death in hospitalized patients.<sup>1,2</sup>

Right ventricular (RV) dysfunction and hemodynamic instability due to acute RV pressure overload are powerful

predictors of poor prognosis in acute PE.<sup>3,4</sup> Therefore, risk stratification is the first step toward tailoring PE treatment.

For high-risk PE, systemic thrombolysis is usually the appropriate first-line therapy.<sup>5-7</sup> However, several population-based studies report underuse of systemic thrombolysis in this clinical scenario.<sup>8-10</sup> When there is contraindication due to prohibitive risks of bleeding or failure of systemic thrombolysis, surgical embolectomy

or percutaneous catheter-directed therapies (CDTs) are recommended for rapid hemodynamic stabilization.<sup>7</sup>

For intermediate-risk PE, available data do not support the routine use of systemic thrombolysis.<sup>11</sup> However, it should be considered in early signs of hemodynamic decompensation and acceptable bleeding risk.<sup>7</sup> In the past decade, several randomized controlled trials and meta-analyses have substantially clarified the optimal management of intermediate-risk PE. In the first instance, these studies focused on the use of full- or low-dose systemic thrombolysis.<sup>11,12</sup> Overall, these studies revealed a reduction in early mortality and hemodynamic deterioration, but the benefit was offset by increasing fatal and intracranial bleeding.<sup>13</sup> Interest in CDTs has therefore re-emerged as an alternative. These percutaneous approaches include mechanical thrombectomy, catheter delivered thrombolytic therapy (*in situ* fibrinolysis) and hybrid pharmacomechanical methods.<sup>14–16</sup> The goal of CDT is to reduce thrombus burden, pulmonary vascular resistance and, consequently, RV overload.

Despite major advancements in endovascular technology, the role of percutaneous mechanical thrombectomy in the treatment of acute PE remains undefined. To date, no studies have been published on the Portuguese experience with continuous aspiration mechanical thrombectomy for the management of PE.

Therefore, we aimed to present the results of the initial experience of a single reference center assessing the effectiveness and safety of percutaneous mechanical thrombectomy for acute high- and intermediate-high-risk PE.

## Methods

### Study design

Over a 24-month period between March 2018 and March 2020, 75 hospitalized patients with acute PE were screened, 29 of whom were consecutive PE patients undergoing percutaneous mechanical thrombectomy for treatment of proximal location, intermediate-high- or high-risk acute PE, were enrolled (Figure 1: Flow chart). The study was approved by the institutional ethics committee, and the study protocol was written according to the ethical guidelines of the 1975 Declaration of Helsinki. Written informed consent was obtained from all patients before the percutaneous procedure.

### Study population

Patients were referred to thrombectomy if aged 18 years or older. Acute PE was considered as symptoms duration equal to or less than 14 days. A computed tomography pulmonary angiography (CTPA) was performed for confirmation of diagnosis, and the presence of intraluminal filling defect in at least one main or lobar pulmonary artery defined the location as proximal.

Prognostic stratification as high- or intermediate-high-risk was performed according to the guidelines published jointly by the European Society of Cardiology (ESC) and the

European Respiratory Society (ERS) on the diagnosis and management of acute PE in 2019.<sup>7</sup>

According to an institutional protocol, based on this ESC/ERS recommendations,<sup>7</sup> patients were eligible for thrombectomy if they met one of the following criteria: high-risk PE and absolute or relative contraindication to systemic thrombolysis, high-risk PE and systemic thrombolysis failure (rescue reperfusion therapy) and intermediate high-risk PE with at least one early sign of hemodynamic decompensation. To identify a higher risk cohort of intermediate PE patients, we used a “3+1” rule, previously described, that recognizes patients who may benefit from invasive therapies but do not meet the threshold for systemic thrombolytic therapy<sup>17</sup> (see [Supplementary figure\\* 1](#)). Patients were excluded if they presented contraindications for therapeutic anticoagulation (such as active bleeding) or had thrombus in the right cardiac chambers.

Patients were referred for percutaneous procedure from their own institution or other national hospitals. All the referred high-risk and intermediate-high-risk PE cases were discussed by the hospital pulmonary embolism response team (PERT), which is available 24 hours a day, seven days a week; the decision to treat was based on consensus from multidisciplinary PERT.

### Study procedure

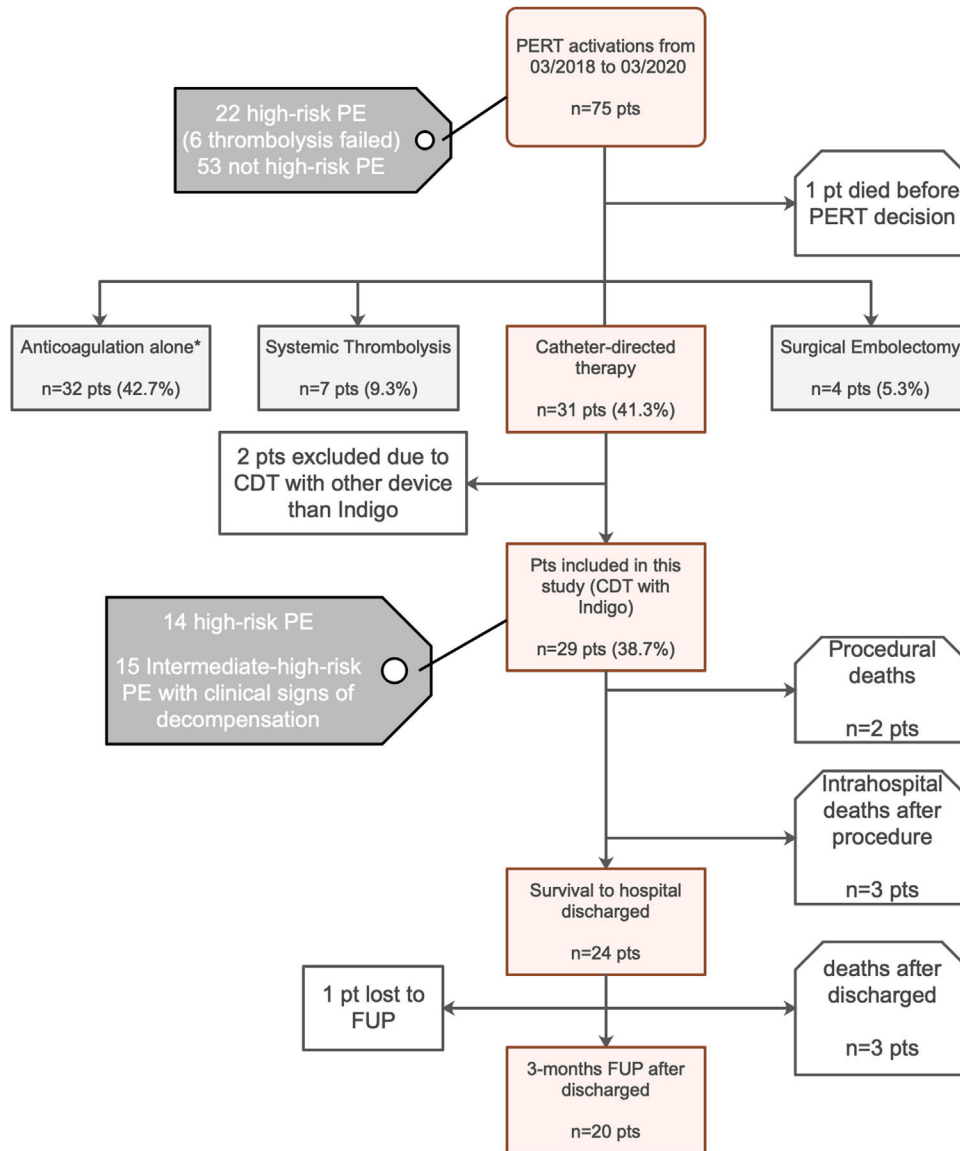
Data on patient demographics, medical history, symptoms and physical examination were obtained. Together with results of blood analysis, 12-lead electrocardiogram, transthoracic echocardiogram (TTE), CTPA, anticoagulation therapy, pulmonary angiographic findings, procedural characteristics and invasive hemodynamic measures were collected. In-hospital and three-month outcomes were obtained. All this information was provided by the referring physician and obtained from electronic medical records.

Based on recorded data, validated prognostic stratification scores from the original and simplified Pulmonary Embolism Severity Index (PESI) were computed.<sup>18</sup> The Charlson Comorbidity Index score was also calculated for each patient.<sup>19</sup>

### Continuous aspiration mechanical thrombectomy

As a first step, we performed an invasive measurement of pulmonary artery pressures (PAP) followed by an initial pulmonary angiogram to demonstrate the filling defects. Mechanical thrombectomy with an 8-French continuous aspiration mechanical thrombectomy catheter (Indigo CAT8, XTORQ, Penumbra®, Alameda, California) connected to a suction pump (Pump MAX & MAX Canister, Penumbra®, Alameda, California) allowed clot aspiration through negative pressure (20–40 cm H<sub>2</sub>O) exertion (see [Supplementary table\\* 1](#) for details of the procedure).

Use of adjunctive *in situ* thrombolytic therapy (combined method) was according to operator discretion. In these cases, a 5-French pigtail catheter (Cordis®, Miami Lakes, USA) was used for an intravenous drug bolus injection.



**Figure 1** Treatment modalities recommended by our institutional Pulmonary embolism response team after its activation and flow chart of the study.

AC: anticoagulation; CDT: catheter-directed mechanical aspiration thrombectomy; FUP: follow-up; PE: pulmonary embolism; PERT: pulmonary embolism response team; pts: patients;

\* Reasons for proposing a conservative strategy with isolated AC: PE with >14 days of onset of symptoms – acute on chronic PE (2 pts); intermediate-low-risk PE (1 pt); intermediate-high-risk PE without clinical signs of decompensation with isolated AC (23 pts); active bleeding or contraindication for AC (4 pts) and poor prognosis or cognitive impairment (2 pts).

At the end of the percutaneous procedure, we performed a final selective pulmonary angiography and reassessed the hemodynamic parameters. Figures 2 and 3 illustrate different situations in which the technique was applied.

## Endpoints

### Acute procedural outcomes

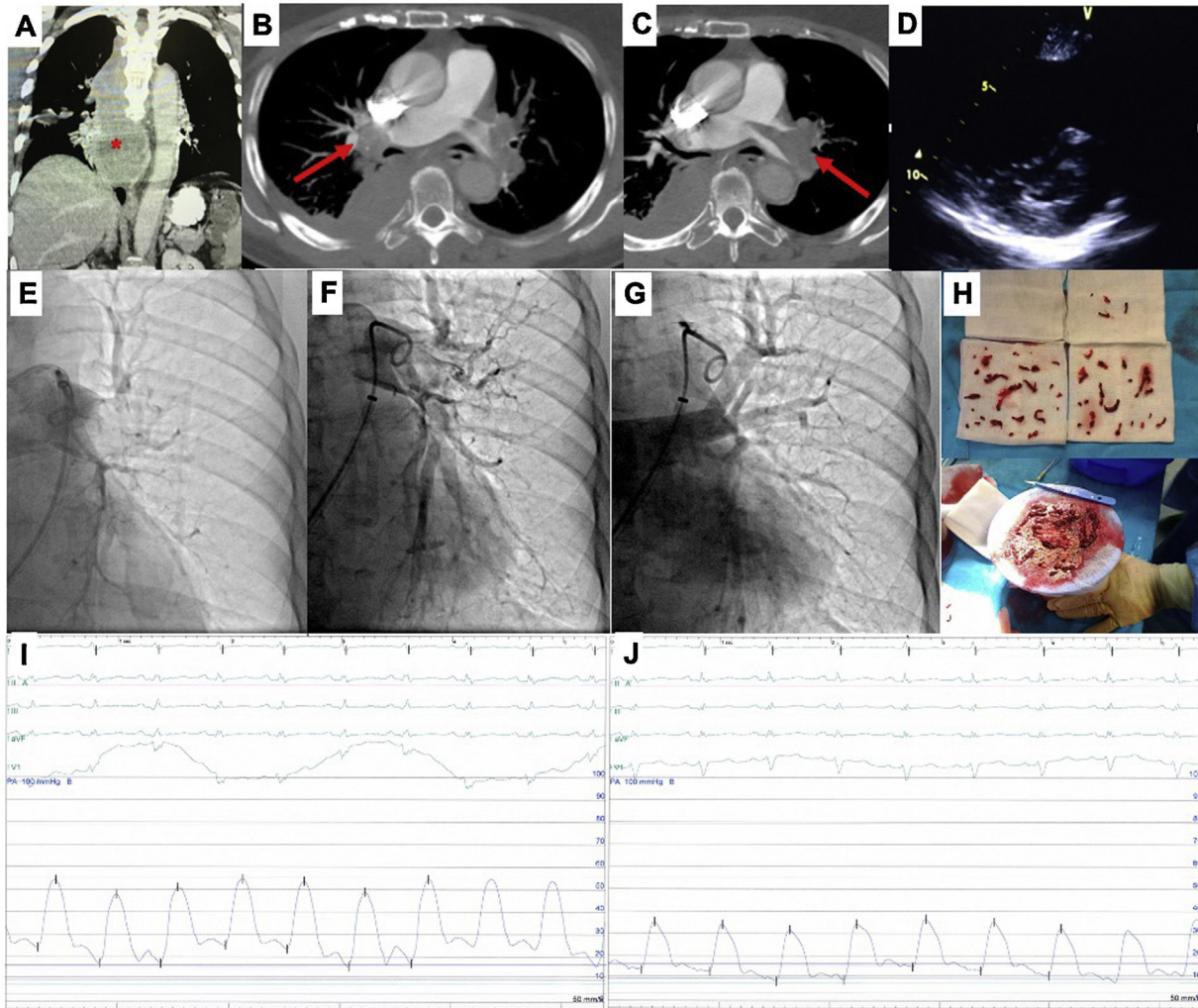
Technical success was defined as successful placement of the devices and initiation of aspiration thrombectomy.<sup>20</sup>

The Miller Score (MS) was used to quantify thrombus burden through revision of the angiographic findings before

and after the procedure and was calculated as previously described<sup>21</sup> (see [Supplementary figure\\* 2](#)). The obstruction and perfusion index were assessed by two independent cardiologists. Pre and post-intervention MS and relative MS reduction, defined as the pre-MS minus the post-MS divided by the pre-MS, were calculated for each patient.

Acute procedural success was defined as technical success plus a significant reduction in the vascular obstruction (defined as a relative reduction of at least 10% of MS) and/or reduction of the systolic PAP of at least 10 mmHg at the end of the mechanical thrombectomy, without the occurrence of major adverse events during the procedure.





**Figure 2** This is the case of a 79-years-old woman admitted with an acute high-risk PE, with contraindication for fibrinolysis due to the presence of a paravertebral mass with medullary compression (A), later diagnosed as a lymphoma (\*), underwent endovascular treatment. Axial contrast enhanced computed tomography at time of diagnosis illustrates central extensive bilateral thrombus (red arrows in B and C). Echocardiography at bedside shows an enlarged right ventricle and a flattened interventricular septum in parasternal short axis view (D); Left pulmonary angiography confirm nearly complete obstruction at the origin (E). Aspiration mechanical thrombectomy was performed with the Indigo<sup>®</sup> CAT8 with improvement of arterial perfusion (F) and venous return (G) of the left lung. Image H displays the extracted clots. There was a decrease in systolic and mean pulmonary artery pressure of 54 and 33 mmHg pre-procedure (I), respectively, to 34 and 20 mmHg post-procedure (J).

**In-hospital outcomes: Efficacy and safety**

Clinical success (efficacy outcome) was defined as survival at hospital discharge and one of the following endpoints at 48 hours after the procedure: 1) stabilization of hemodynamic parameters (resolution of hemodynamic shock with no need for vasopressor support); 2) improvement of shock index with reaching values of ratio <1.0; 3) increase in the  $paO_2/FiO_2$  ratio with reaching values above 200; 4) improvement in pulmonary hypertension, right-sided heart strain or both.

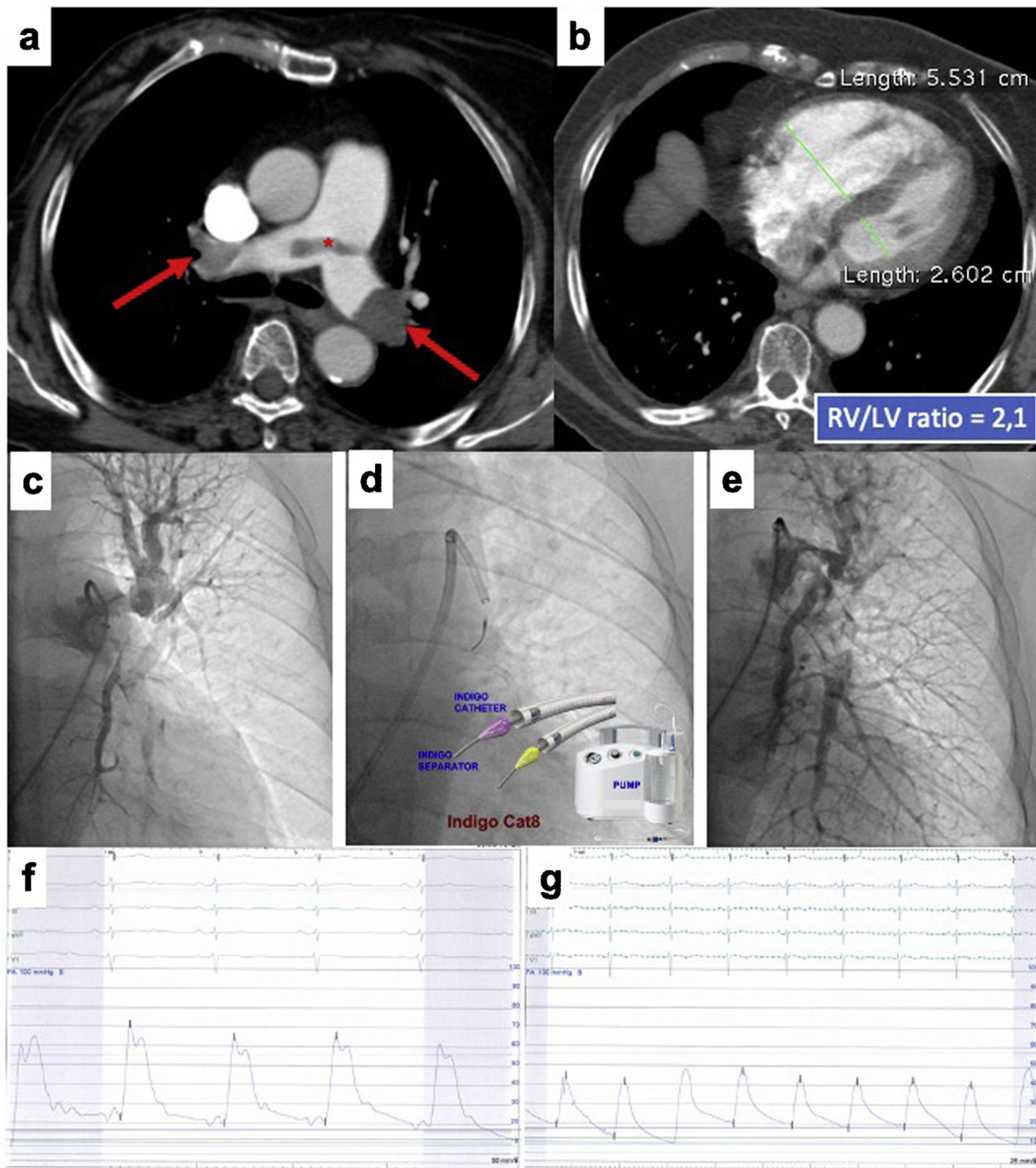
Major adverse event rate (primary safety outcome) was a composite of severe adverse events potentially related to device or procedure and/or severe or life-threatening bleeding in the first 48 hours. Non-major adverse event rate (secondary safety outcome) was a composite of moderate

or mild bleeding. Bleeding events were classified by the Global Utilization of Streptokinase and Tissue Plasminogen Activator for Occluded Coronary Arteries (GUSTO) bleeding criteria<sup>22</sup> (see [Supplementary table\\* 2](#)).

**Short-term outcomes: Three-month follow-up**

Three months after hospital discharge, short-term outcomes were recorded, including symptomatic recurrence of PE, unplanned right heart failure admission and all-cause mortality. Recurrent PE was defined as symptomatic and objectively confirmed by CTPA, ventilation-perfusion lung scanning or invasive contrast pulmonary angiography.

Within three months after the procedure, patients were clinically reassessed in our Pulmonary Hypertension Clinic. At this time, clinical assessment for persistent dyspnea,



**Figure 3** This is the case of an 86-years old woman who had a recent ischemic stroke and was admitted with an acute intermediate-high-risk PE, catheter-directed therapy proposed due to respiratory failure ( $\text{paO}_2/\text{FiO}_2$  ratio=170), with no response to parenteral anticoagulation. a) and b) Axial contrast enhanced computed tomography at time of diagnosis illustrates central extensive bilateral thrombus (red arrows) and huge dilatation of right ventricle (RV/LV ratio of 2.1). c) Selective pulmonary angiography confirms obstruction of left inferior lobar artery and lingula. d) Continuous aspiration mechanical thrombectomy was performed with Indigo® CAT8. A Penumbra Indigo System Separator SEP8 device was used through the aspiration catheter to facilitate clot aspiration by preventing the catheter from clogging in the extensive thrombus. e) Post-procedure we observe a near restoration of the normal perfusion in the left lung. f) and g) There was a decrease in systolic and mean pulmonary artery pressure of 65 and 33 mmHg pre-procedure, respectively, to 42 and 25 mmHg post-procedure.  $\text{PaO}_2/\text{FiO}_2$  ratio increased to 371 at 48 hours after intervention.

N-terminal pro-B-type natriuretic peptide (NT-proBNP) blood levels were dosed and a TTE was performed for RV function reevaluation and non-invasive pulmonary artery pressure measurement.

### Statistical analysis

Continuous variables are expressed as mean  $\pm$  standard deviation or median  $\pm$  interquartile range (IQR) if distributions are skewed. Categorical variables are summarized as frequency and percentage for each data category. Missing data were not imputed for the efficacy and safety analyses. Comparisons of clinical, laboratorial, echocardiographic and hemodynamic characteristics before and after the procedure were conducted with the two-sided paired Student's t-test or Wilcoxon's non-parametric test (if continuous data), when appropriate, or the two-sided Fisher exact test and McNemar's test (if categorical variables). All reported p values were two-sided and a  $p < 0.05$  was considered statistically significant. Statistical analysis was performed with Statistical Package for Social Sciences (SPSS) software, version 25.0 (IBM Corp., Armonk, NY, USA).

## Results

### Baseline demographics

Among the 29 patients, mean age was  $67.2 \pm 14.4$  years, and 72.4% were women. Hypertension (72.4%) was the most frequent comorbidity. Common risk factors for PE comprised obesity (body mass index of greater than  $30 \text{ kg/m}^2$  in 34.8%), immobility within 30 days of PE diagnosis (44.8%) and active cancer (20.7%). History of previous venous thromboembolism was present in 24.1%. The baseline demographics are outlined in [Table 1](#).

### Clinical and pulmonary embolism characteristics

Dyspnea was the main presenting symptom (58.6%). Average mean blood pressure, HR and peripheral oxygen saturation values were, respectively,  $75.3 \pm 17.9$  mmHg,  $111.3 \pm 20.6$  bpm and  $86.0 \pm 18.5\%$ . In 96.6% of patients, CTPA showed bilateral arterial pulmonary involvement. Regarding laboratory findings, mean lactate blood level was  $2.6 \pm 1.4$  mmol/L, median levels of high-sensitivity cardiac T troponin was 76.0 ng/L and NT-proBNP was 7898.0 pg/ml. The electrocardiogram showed repolarization changes consistent with RV overload in 72.4%, complete right bundle branch block in 31.0% and the typical pattern S1Q3T3 in 34.5%. The initial TTE revealed the presence of RV dilation (RV/LV ratio  $> 0.9$ ) in all patients and RV dysfunction in 79.3%. The mean systolic PAP was  $61.8 \pm 17.3$  mmHg and the mean tricuspid annular plane excursion (TAPSE) was  $14.5 \pm 3.7$  mm.

Acute intermediate-high-risk PE and high-risk PE were observed in 51.7% and 48.3% of patients, respectively. In the subgroup of patients with high-risk PE, 71.4% had absolute contraindications for systemic thrombolysis (history of hemorrhagic stroke in two patients, central nervous system neoplasm in two patients and major trauma, surgery or head injury in the previous three weeks in six patients);

28.6% had undergone failed systemic thrombolysis. Thirteen patients were receiving inotropic support before treatment, and three required mechanical ventilation.

More than half of the patients were in class IV or V of the original PESI score (58.6%) presenting a high or very high-risk of 30-day mortality. The median Charlson Comorbidity Index score for the cohort was 4.0 (IQR 3.0-6.0).

Clinical and pulmonary embolism characteristics are presented in [Table 1](#).

### Procedural characteristics

Procedural characteristics are summarized in [Table 2](#). Right femoral venous access was the most frequently used (82.8%). Bilateral pulmonary intervention was performed in 72.4% of patients. In situ thrombolytic therapy (bolus injection of alteplase) via catheter was administered to four patients (13.8%) with a median total dose of 10.0 mg (range from 5.0-15.0 mg). This was given at the investigator's discretion because of perceived major thrombus burden and not because of clinical decompensation.

The mean fluoroscopy time was  $40.5 \pm 15.8$  minutes and intra-procedural blood loss was 150-900 ml.

### Endpoint analysis

The Indigo CAT8 XTORQ catheter was successfully positioned within the thrombus in 28 patients, achieving 96.6% technical success. In one patient, the catheter was not correctly placed in the right main pulmonary artery owing to catheter kinking at the level of the main pulmonary artery bifurcation due to its marked angulation.

Miller angiographic obstruction index score decreased from  $21.9 \pm 7.2$  at baseline to  $16.4 \pm 6.5$  at procedure completion, revealing a significant reduction in both obstruction and perfusion indexes ( $p < 0.001$ ) ([Figure 4](#)). The average of invasively measured systolic PAP decreased from  $63.2 \pm 19.8$  mmHg at baseline to  $53.0 \pm 17.7$  mmHg at procedure completion (mean difference,  $-10.2$  mmHg;  $p < 0.001$ ). Acute procedural success was achieved in 75.9%. A relative reduction of at least 50% of MS was only achieved in 10.3% of the patients.

Considering in-hospital efficacy outcomes, a statistically significant improvement was observed in all of the hemodynamic and oxygenation parameters ([Table 3](#)). There was a significant elevation of mean  $\text{paO}_2/\text{FiO}_2$  ratio and a significant reduction of shock index. The need for aminergic support significantly reduced from 44.8% to 10.3% of patients in the first 48 hours after the procedure ( $p = 0.006$ ) and RV function improved in 66.6% of the 14 patients who underwent TTE 48 hours after the procedure ( $p = 0.008$ ). Globally, clinical success was 75.9% (10 patients with high-risk and 12 with intermediate high risk PE).

Concerning primary safety outcomes ([Table 4](#)), the major adverse event rate was 10.3%, resulting from the occurrence of two potential procedure-related deaths (as related procedural complications cannot be excluded) and one pulmonary macroembolization during the device progression, followed by cardiorespiratory arrest with need for cardiopulmonary resuscitation, mechanical ventilation and systemic thrombolysis (this patient survived the procedure, but died on day



**Table 1** Baseline clinical characteristics (n=29).

<i>Demographics</i>	
Age, mean $\pm$ SD, years	67.2 $\pm$ 14.4
BMI, mean $\pm$ SD, Kg/m <sup>2</sup>	28.1 $\pm$ 4.5
Female, n (%)	21 (72.4)
<i>Comorbid conditions and risk factors</i>	
Arterial hypertension, n (%)	21 (72.4)
Current smoking, n (%)	4 (13.8)
Dyslipidemia, n (%)	15 (51.7)
Diabetes mellitus, n (%)	5 (17.1)
Active cancer, n (%)	6 (20.7)
Immobilization (within previous month), n (%)	13 (44.8)
Auto-immune diseases, n (%)	5 (17.2)
Major surgery or trauma (within previous month), n (%)	2 (6.9)
Estrogen use, n (%)	3 (10.3)
Coronary artery disease, n (%)	5 (17.2)
Prior Myocardial infarction (within previous 3 months), n (%)	4 (13.8)
Congestive heart failure, n (%)	1 (3.4)
History of VTE, n (%)	7 (24.1)
Charlson Comorbidity Index, median (IQR)	4 (3; 6)
<i>Clinical symptoms and signs at presentation</i>	
Dyspnea, n (%)	17 (58.6)
Presyncope/Syncope, n (%)	12 (41.4)
Chest pain, n (%)	3 (10.3)
Heart rate, mean $\pm$ SD, bpm	111.3 $\pm$ 20.6
Tachycardia $\geq$ 110 bpm, n (%)	14 (48.3)
Shock index $>$ 1, n (%)	18 (62.1)
Systolic arterial pressure, mean $\pm$ SD, mmHg	102.1 $\pm$ 23.4
Diastolic arterial pressure, mean $\pm$ SD, mmHg	63.0 $\pm$ 16.5
Mean arterial pressure, mean $\pm$ SD, mmHg	75.3 $\pm$ 17.9
Respiratory rate $>$ 20 breaths/min, n (%)	21 (72.4)
Peripheral oxygen saturation, mean $\pm$ SD, %	86.0 $\pm$ 18.5
paO <sub>2</sub> /FiO <sub>2</sub> , mean $\pm$ SD	212.3 $\pm$ 81.0
RV/LV ratio $>$ 0.9, n (%)	29 (100)
RV dysfunction, n (%)	27 (93.1)
RV strain on EKG, n (%)	21 (72.4)
<i>Laboratory findings</i>	
Lactate level, mean $\pm$ SD, mmol/L	2.6 $\pm$ 1.4
Creatinine, mean $\pm$ SD, mg/dl	1.1 $\pm$ 0.3
Cardiac T troponin level, median (IQR), ng/L	76.0 (43.3; 138.8)
NT pro-BNP level, median (IQR), pg/ml	7898.0 (3152.3; 14340.5)
<i>PE risk stratification, n (%)</i>	
Original PESI score $\geq$ III	24 (82.8)
Simplified PESI score $\geq$ 1	28 (96.6)
Intermediate high-risk	15 (51.7)
High-risk with contraindication for lysis	10 (34.5)
High-risk with failed systemic lysis	4 (13.8)

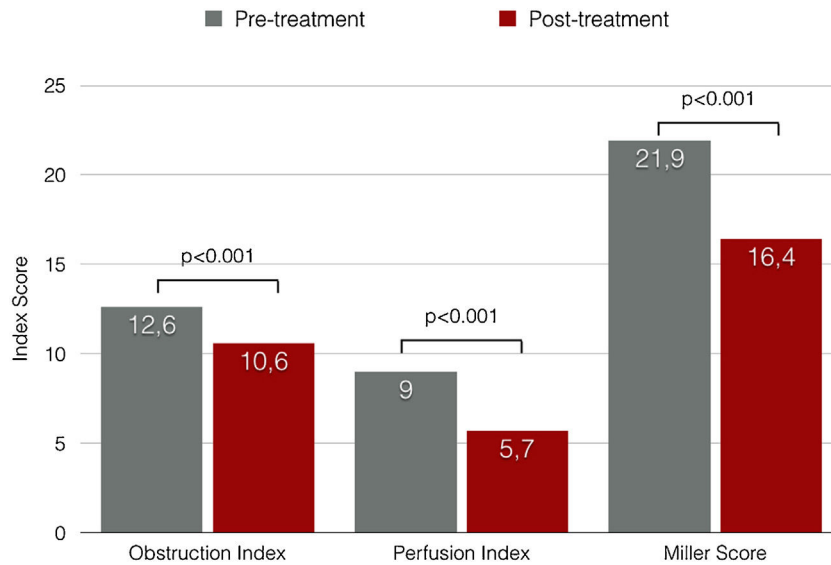
BMI: body mass index; BNP: brain natriuretic peptide; IQR: interquartile range; PE: pulmonary embolism; PESI: Pulmonary Embolism Severity Index; SD: standard deviation

Normal reference range: Partial pressure of oxygen  $>$ 80 mmHg; PO<sub>2</sub>/fiO<sub>2</sub> ratio  $>$ 400 mmHg; Lactate level  $<$ 1.2 mmol/L; Cardiac T troponin level  $<$ 13 ng/L; NT pro-BNP level  $<$ 88 mmHg (male  $<$ 50 years),  $<$ 227 mmHg (male 50-65 years),  $<$ 153 mmHg (woman  $<$  50 years),  $<$ 334 (woman 50-65 years)

Original PESI risk strata:<sup>18</sup> Class I: Very low 30-day mortality risk (0-1.6%); Class II: Low 30-day mortality risk (1.7-3.5%); Class III: Moderate 30-day mortality risk (3.2-7.1%); Class IV: High 30-day mortality risk (4.0-11.4%); Class V: Very high 30-day mortality risk (10.0-24.5%)

Simplified PESI risk strata: 0 points: 30-day mortality risk 1.0%;  $\geq$ 1 point(s): 30-day mortality risk 10.9%





**Figure 4** Changes in the obstruction index, perfusion index and Miller Score before and after treatment evaluated by angiography analysis.

12 of hospitalization with active urinary cancer). Regarding intra-procedure deaths: One patient died during the procedure due to multiorgan failure in the evolution of cardiogenic shock over several hours; the other patient died at the end of the procedure; PE recurrence was considered the probable cause of death. There were no other treatment-related events, nor any severe nor life-threatening bleeding. Secondary safety outcome occurrence was 17.2%: three patients needed a red cell transfusion within 48 hours without visible bleeding, and two patients had mild hemoptysis during the procedure with no need of percutaneous or surgical intervention or mechanical ventilation.

Five patients died while hospitalized (in-hospital mortality rate of 17.2%). Three of these deaths are described above, however two additional patients died due to mesenteric ischemia and pneumonia on days 15 and 34 of hospitalization, respectively.

The median length of hospital stay was 12.0 (IQR 16.0) and the median intensive care unit stay was 5.0 days (IQR 6.5).

**Short-term outcomes: Three-month follow-up**

Clinical follow-up was completed in 95.8% of patients who survived to hospital discharged (23 patients). Three patients died before completing three months from hospital discharge due to active cancer (Table 5).

At three months post-procedure, one patient was lost to follow-up and 20 patients were alive. Of these patients, 15 (75.0%) were in World Health Organization functional class I or II. Median value of NT-proBNP was significantly reduced compared to the value before the procedure: median 6833 (IQR 9206) vs 176 (IQR 230); p=0.003. Four patients (20.0%) were diagnosed with pulmonary hypertension confirmed by right heart catheterization, one of them was diagnosed with pulmonary arterial hypertension (group 1) related to an ostium secundum atrial septal defect; the remaining three

**Table 2** Angiography and procedural characteristics (n=29).

Angiographic index of severity (Miller score), mean ± SD	22.0 ± 7.0
Systolic pulmonary artery pressure, mean ± SD, mmHg	65.0±18.6
Access site, n (%)	
Right femoral vein	24 (82.8%)
Left femoral vein	5 (17.2%)
Access closure, n (%)	
Perclose proglide system (Abbot Vascular®)	28 (96.6%)
Manual compression	1 (3.4%)
Procedural time, mean ± SD, min	111.7±46.2
Fluoroscopy time, mean ± SD, min	40.5±15.8
Contrast volume, mean ± SD, mL	179.5±92.6
Local of intervention, n (%)	
Bilateral	21 (72.4%)
Unilateral, right	5 (17.2%)
Unilateral, left	3 (10.3%)
Thrombolytic infusion catheter, n (%)	4 (13.8)
Total t-PA dose, mean ± SD, mg	10.0±4.1

IQR: interquartile range; PE: pulmonary embolism; SD: standard deviation.

were diagnosed with chronic thromboembolic pulmonary hypertension (CTEPH, group 4). Of these three patients, two had a mean PAP of 50 mmHg before the mechanical thrombectomy and other features of pre-existing pulmonary hypertension. Only one patient (5.0%) developed chronic thromboembolic disease without rest pulmonary hypertension, and another one (5.0%) presented recurrent PE owing to anticoagulation therapy non-compliance. One temporary inferior vena cava filter was implanted after the procedure

**Table 3** In-hospital efficacy outcomes (n=29).

	Pre-procedure	Post-procedure	Absolute difference	p-value
<i>Pulmonary artery pressure, mean ± SD, mmHg</i>				
sPAP	63.2±19.8	53.0±17.7	-10.2±11.5* <sup>1</sup>	<0.001
dPAP	24.5±9.0	21.4±7.9	-3.1±6.2	0.027
mPAP	37.4±10.8	31.6±10.2	-5.9±7.2	0.001
<i>Miller index, mean ± SD</i>	21.9±7.2	16.4±6.5	-5.5±3.0	<0.001
<i>PO<sub>2</sub>/fiO<sub>2</sub> ratio, mean ± SD</i>	209.1±84.0	286.2± 114.8	+77.1±103.2	0.001
<i>Shock index, mean ± SD</i>	1.2±0.3	0.8±0.2	-0.4±0.4	<0.001
<i>Hemodynamic decompensation at 48 hours (hypotension and/or aminergic support), n (%)</i>	13 (44.8)	3 (10.3)	-75.0%	0.006
<i>RV dysfunction, n (%)</i>	23/29 (79.3)	4/14 (28.6)	-66.6%* <sup>2</sup>	0.008

\*<sup>1</sup> data not available for 2 patients with major adverse events during procedure;

\*<sup>2</sup> data available for 14 patients with echocardiogram 48 hours post-procedure.

dPAP: diastolic pulmonary arterial pressure; mPAP: mean pulmonary arterial pressure; PO<sub>2</sub>/fiO<sub>2</sub> ratio: partial pressure arterial oxygen/fraction of inspired oxygen ratio; SD: standard deviation; sPAP: systolic pulmonary arterial pressure.

**Table 4** In-hospital safety outcomes (n=29).

<i>Major adverse events within 48 hours, a composite of, n (%):</i>	3 (10.3)
- Device or procedure-related death	2 (6.9)
- Pulmonary vascular injury	0
- Cardiac injury	0
- Arrhythmias requiring treatment	0
- Cardiorespiratory arrest with unplanned requirement for ventilation*	1 (3.4%)
- Severe or life-threatening bleeding	0
<i>Non-major adverse event, a composite of, n (%):</i>	5 (17.2)
- Anemia (without visible bleeding) requiring transfusion but did not result in haemodynamic compromise	3 (10.3)
- Minor bleeding	2 (6.9%)
<i>In-hospital death, n (%)</i>	5 (17.2)

\* Due to pulmonary macroembolization during the device progression.

in one patient with myeloid angiopathy who had a contraindication to long-term anticoagulation therapy.

## Discussion

In our first cohort of patients with acute PE at higher risk, aspiration thrombectomy with Indigo Mechanical Thrombectomy System was feasible for thrombus removal and effective in clinical improvement at 48 hours, displaying acceptable safety in view of the patients' clinical profile.

According to current guidelines, patients with high-risk PE have a mandatory indication for reperfusion with systemic thrombolysis, due to the high mortality associated with acute RV failure (25%-65%).<sup>6,23</sup> However, in ICOPER registry [2], two thirds of patients were ineligible to thrombolysis and in the *Registro Informatizado de la Enfermedad Trombo Embólica*,<sup>24</sup> only 20% of the hemodynamically unstable PE patients received reperfusion treatment. In our series, 10 patients in the high-risk group presented contraindications for thrombolysis. Considering the lack of access to emergent surgical embolectomy in our country, percutaneous thrombectomy using the Indigo® catheter

seems to be a promising alternative that broadens the spectrum of patients who can undergo reperfusion in high-risk PE. Additionally, it might be possible to extend the use of aspiration thrombectomy to patients with high-risk PE and high-risk of bleeding (such as elderly and active malignancy). Randomized data to validate this strategy are much needed. Systemic thrombolysis in acute PE is associated with a rate of major bleeding up to 9-24%, including risk of intracranial hemorrhage.<sup>13,25</sup> In a prospective registry from De Gregory et al.,<sup>26</sup> aspiration thrombectomy in combination with low-dose catheter-directed thrombolysis, as first-line treatment in acute unstable PE, seems to be effective and safe with 2.1% major bleeding.

In intermediate-risk PE, the role of reperfusion is more controversial. In the largest PEITHO trial<sup>11</sup> using full-dose systemic fibrinolysis, tenecteplase reduced the risk of death or cardiovascular collapse by 56% in 1006 patients with intermediate-risk PE. However, the benefit was outweighed by a higher risk of severe bleeding and a 10 times greater risk of intracranial bleeding.<sup>11</sup> Meta-analyses of systemic fibrinolysis assays in acute PE have shown similar findings.<sup>13,27</sup> Concern about the risk of life-threatening hemorrhage, which is close to 3%-5% outside clinical trials,<sup>3,28</sup> has

**Table 5** Short-term events after hospital discharge.

All-cause mortality (at 3 months FUP), % (n/N)	13.0 (3/23)
Symptomatic recurrence of PE, % (n/N)	5.0 (1/20)
Pulmonary hypertension, a composite of, % (n/N):	20 (4/20)
- CTEPH	5 (1/20)
- pre-existing CTEPH	10 (2/20)
- pulmonary arterial hypertension (group 1)	5 (1/20)
CTED without rest pulmonary hypertension	5 (1/20)
Unplanned right heart failure admission, % (n/N)	5.0 (1/20)
PE related death, % (n/N)	0

CTEPH: chronic thromboembolic pulmonary hypertension; CTED: chronic thromboembolic disease; FUP: follow-up; PE: pulmonary embolism.

reduced enthusiasm for full-dose systemic fibrinolysis and triggered the development of alternative therapies with a lower risk of bleeding, such as aspiration thrombectomy.<sup>29,30</sup>

Regarding efficacy, in our cohort study, the clinical success 48 hours after aspiration thrombectomy with Indigo® Mechanical Thrombectomy System was numerically superior in intermediate-risk PE (80.0%) compared with high-risk PE (71.4%), similar to other reports of aspiration thrombectomy.<sup>31</sup> However, clinical success was slightly lower in our cohort than in the PERFECT registry,<sup>32</sup> in which 97.3% of patients had intermediate-risk PE and 85.7% high-risk PE. This difference could be explained for several reasons. Firstly, the selection of patients with intermediate-risk PE for invasive treatment was different in the two studies. It is known that 90-94% of patients in this category of risk will have a favorable evolution with isolated parenteral anticoagulation.<sup>11,13</sup> In our cohort, we selected patients with intermediate-risk PE and at least one clinical sign of decompensation, in the attempt to select patients with the highest risk of an unfavorable evolution. It is still unknown which intermediate-risk PE can benefit from an invasive strategy. Further research is needed to clarify the patient-specific risks of decompensation within this category. Secondly, in the PERFECT registry, patients with high-risk PE were treated with mechanical or pharmaco-mechanical thrombectomy, but almost all patients with intermediate-risk PE were treated exclusively with catheter-directed thrombolysis with low-doses of thrombolytics.<sup>32</sup> Thereby, the ideal invasive therapeutic strategy, particularly in intermediate-risk PE, remains unclear. Most evidence comes from studies using low dose thrombolysis with ultrasound-facilitated catheter-directed administration (ULTIMA, SEATTLE II and OPTALYSE PE trials),<sup>33-35</sup> showing improvement in RV function with a good safety profile and reduced rate of major bleeding. Still, data on clinically important outcomes are lacking.<sup>30</sup> Most recently, a study using a large-bore mechanical thrombectomy device (FLARE trial)<sup>36</sup> also demonstrated good results. Regarding the use of small-bore embolectomy, as Indigo®

aspiration system, there are few case series reports in the literature.<sup>30,31,37-39</sup> All the published studies found a significant reduction in postprocedural RV/LV ratio with the Indigo® aspiration system in PE.<sup>31,37-39</sup> In the Al-Hakim et al. article,<sup>37</sup> Indigo® CDT was used to treat six patients with intermediate-risk PE and contraindication for thrombolysis. They reported a significant reduction in systolic PAP (58.2 mmHg vs. 43 mmHg,  $p < 0.05$ ) and Miller index (15.0 vs. 9.8,  $p < 0.01$ ), although similar to our study, complete clearance of thrombi was not achieved. Incomplete removal of thrombi was also observed in up to 80% in the Araszkievicz et al. study.<sup>39</sup> More data on the effectiveness and safety of Indigo® system comes from the recent publication of the prospective trial of the device that included 119 consecutive patients with intermediate-risk PE (EXTRACT-PE trial).<sup>40</sup> The authors found a significant reduction in the RV/LV ratio at 48 hours (mean reduction of 27.3%); the low major adverse event rate was 1.7%. In our study, we found an average reduction of 16.1% in mean systolic PAP from pre-procedure to post-procedure, achieved in 86.2% of patients receiving no procedural tPA. These immediate hemodynamic results are quite good compared with data from the EXTRACT-PE trial (8.7% reduction in mean systolic PAP).<sup>40</sup>

In our cohort, acute procedural success (75.9%), which in its definition, only required partial removal of the thrombus with a relative reduction of at least 10% of MS and/or reduction of systolic PAP at least 10 mmHg, was equal to clinical success (75.9%). It suggests that even small improvements in pulmonary reperfusion can reduce RV strain and increase cardiac output leading to a rapid and effective hemodynamic and respiratory improvement.<sup>41</sup> In our series, analyzing only patients who survived at discharge, clinical success of the procedure was 91.7%, revealing the capacity of Indigo® system to cause rapid and significant clinical improvement at 48 hours post-procedure.

Concerning safety, in our cohort, there was no severe or life-threatening bleeds according to GUSTO criteria. In-hospital mortality resembled the results of other cohorts (17.2% versus 22.2% in Ciampi-Dopazo et al. and 16.7% in Pieraccini et al. studies)<sup>31,38</sup> explained either by baseline critical condition due to PE severity and by patients' comorbidities, as assessed by original PESI score (original PESI score >III in 82.8%), rather than to contest the efficacy of mechanical thrombectomy with Indigo® system. The Charlson Comorbidity Index is also a good predictor of in-hospital and long-term outcomes following acute PE.<sup>42</sup> In fact, the median Charlson Comorbidity Index of 4 in this cohort indicates that patients were severely ill before the occurrence of pulmonary embolism, explaining the high in-hospital and three-month mortality.

Indigo® Mechanical Thrombectomy System (Penumbra, Inc) enables thrombus removal from the pulmonary circulation, and is highly maneuverable and safe without damaging cardiac and pulmonary structures. The Indigo® catheter has an 8-F outer diameter, which gives it some advantages over devices with a higher profile, such as Flowtriver<sup>37</sup> or AngioVAC<sup>43,44</sup> such as safety and fast learning curve for handling. Nevertheless, there are some concerns: risk of blood loss during aspiration (10% of patients needed a transfusion at 48 hours in our cohort) and macro and microembolization. We had one case of intraprocedural macroembolization with further hemodynamic instability. After this complication, we

started to propose, whenever the patient's stability allows, the study of the peripheral venous system by ultrasound, or preferably, CT angiography to exclude thrombus before the pulmonary thrombectomy.

At three-month follow-up, we observed high mortality, mainly attributable to preexistent severe diseases, as almost all deaths were in patients with active cancer. This does not diminish the clinical value of thrombectomy, although more precise criteria are required for the use of these invasive treatment strategies in patients at an advanced stage of multiorgan failure or with a compromised mid to long-term vital prognosis.

### Study limitations

The present study had several limitations, including a limited sample size from a single center, its observational nature and lack of information about long-term clinical outcomes. In addition, echocardiographic evaluation at 48 hours post-procedure was not performed in all patients due to the retrospective nature of the study and because several cases were referred from other hospitals.

### Conclusions

Our data include the first series of patients with acute PE treated with Indigo® Mechanical Thrombectomy nationally. It confirms the feasibility and efficacy of continuous aspiration thrombectomy in the treatment of acute high-risk or intermediate-high-risk with clinical signs of decompensation. There was a significant improvement in clinical parameters such as hemodynamics, gas exchange, and echocardiographic signs of RV overload after aspiration thrombectomy. Nevertheless, all-cause mortality is high, probably related to baseline high-risk features of the study population as assessed by the original PESI and Charlson Comorbidity Index scores.

Before establishing a recommendation for the use of aspiration thrombectomy in acute PE treatment, future prospective randomized studies are needed to confirm and expand our observations and identify patients clearly – especially in the intermediate-high-risk category – who could benefit most from interventional therapies.

### Conflicts of interest

The authors have no conflicts of interest to declare.

### Appendix A. Supplementary data

Supplementary data associated with this article can be found, in the online version, at [doi:10.1016/j.repc.2021.04.009](https://doi.org/10.1016/j.repc.2021.04.009).

### References

- Raskob GE, Angchaisuksiri P, Blanco AN, et al. Thrombosis: a major contributor to global disease burden. *Arterioscler Thromb Vasc Biol.* 2014;34:2363–71.
- Goldhaber SZ, Visani L, De Rosa M. Acute pulmonary embolism: clinical outcomes in the International Cooperative Pulmonary Embolism Registry (ICOPER). *Lancet.* 1999;353:1386–9.
- Wood KE. Major pulmonary embolism: review of a pathophysiological approach to the golden hour of hemodynamically significant pulmonary embolism. *Chest.* 2002;121:877–905.
- Scridon T, Scridon C, Skali H, et al. Prognostic significance of troponin elevation and right ventricular enlargement in acute pulmonary embolism. *Am J Cardiol.* 2005;96:303–5.
- Konstantinides SV, Barco S, Lankeit M, et al. Management of pulmonary embolism: an update. *J Am Coll Cardiol.* 2016;67:976–90.
- Konstantinides SV, Meyer G. The 2019 ESC guidelines on the diagnosis and management of acute pulmonary embolism. *Eur Heart J.* 2019;40:3453–5.
- Konstantinides SV, Meyer G, Becattini C, et al. 2019 ESC guidelines for the diagnosis and management of acute pulmonary embolism developed in collaboration with the European Respiratory Society (ERS). *Eur Heart J.* 2020;41:543–603.
- Stein PD, Matta F. Thrombolytic therapy in unstable patients with acute pulmonary embolism: saves lives but underused. *Am J Med.* 2012;125:e13.
- Jiménez D, Bikdeli B, Barrios D, et al. Epidemiology, patterns of care and mortality for patients with hemodynamically unstable acute symptomatic pulmonary embolism. *Int J Cardiol.* 2018;269:327–33.
- Keller K, Hobohm L, Ebner M, et al. Trends in thrombolytic treatment and outcomes of acute pulmonary embolism in Germany. *Eur Heart J.* 2020;41:522–9.
- Meyer G, Vicaut E, Danays T, et al. Fibrinolysis for patients with intermediate-risk pulmonary embolism. *N Engl J Med.* 2014;370:1402–11.
- Sharifi M, Bay C, Skrocki L, et al. Moderate pulmonary embolism treated with thrombolysis (from the “MOPETT” Trial). *Am J Cardiol.* 2013;111:273–7.
- Chatterjee S, Chakraborty A, Weinberg I, et al. Thrombolysis for pulmonary embolism and risk of all-cause mortality, major bleeding, and intracranial hemorrhage: a meta-analysis. *JAMA.* 2014;311:2414–21.
- Dudzinski DM, Giri J, Rosenfield K. Interventional treatment of pulmonary embolism. *Circ Cardiovasc Interv.* 2017;10, e004345.
- Nosher JL, Patel A, Jagpal S, et al. Endovascular treatment of pulmonary embolism: selective review of available techniques. *World J Radiol.* 2017 Dec 28;9:426–37.
- Jaber WA, Fong PP, Weisz G, et al. Acute pulmonary embolism: with an emphasis on an interventional approach. *J Am Coll Cardiol.* 2016;67:991–1002.
- Kosova EC, Desai KR, Schimmel DR. Endovascular management of massive and submassive acute pulmonary embolism: current trends in risk stratification and catheter-directed therapies. *Curr Cardiol Rep.* 2017;19:54.
- Donzé J, Le Gal G, Fine MJ, et al. Prospective validation of the Pulmonary Embolism Severity Index. A clinical prognostic model for pulmonary embolism. *Thromb Haemost.* 2008;100:943–8.
- Charlson ME, Pompei P, Ales KL, et al. A new method of classifying prognostic comorbidity in longitudinal studies: development and validation. *J Chronic Dis.* 1987;40:373–83.
- Banovac F, Buckley DC, Kuo WT, et al. Reporting standards for endovascular treatment of pulmonary embolism. *J Vasc Interv Radiol.* 2010;21:44–53.
- Miller GA, Sutton GC, Kerr IH, et al. Comparison of streptokinase and heparin in treatment of isolated acute massive pulmonary embolism. *Br Med J.* 1971;33:616.
- GUSTO investigators. An international randomized trial comparing four thrombolytic strategies for acute myocardial infarction. *N Engl J Med.* 1993;329:673–82.
- Kasper W, Konstantinides S, Geibel A, et al. Management strategies and determinants of outcome in acute major pulmonary



- embolism: results of a multicenter registry. *J Am Coll Cardiol*. 1997;30:1165–71.
24. Jiménez D, de Miguel-Díez J, Guijarro R, et al. Trends in the management and outcomes of acute pulmonary embolism: analysis from the RIETE registry. *J Am Coll Cardiol*. 2016;67:162–70.
  25. Kucher N, Rossi E, De Rosa M, et al. Massive pulmonary embolism. *Circulation*. 2006;113:577–82.
  26. De Gregorio MA, Guirola JA, Kuo WT, et al. Catheter-directed aspiration thrombectomy and low-dose thrombolysis for patients with acute unstable pulmonary embolism: prospective outcomes from a PE registry. *Int J Cardiol*. 2019;287:106–10.
  27. Wan S, Quinlan DJ, Agnelli G, et al. Thrombolysis compared with heparin for the initial treatment of pulmonary embolism: a meta-analysis of the randomized controlled trials. *Circulation*. 2004;110:744–9.
  28. Fiumara K, Kucher N, Fanikos J, et al. Predictors of major hemorrhage following fibrinolysis for acute pulmonary embolism. *Am J Cardiol*. 2006;97:127–9.
  29. Tafur AJ, Shamoun FE, Patel SI, et al. Catheter-directed treatment of pulmonary embolism: a systematic review and meta-analysis of modern literature. *Clin Appl Thromb Hemost*. 2017;23:821–9.
  30. Giri J, Sista AK, Weinberg I, et al. Interventional therapies for acute pulmonary embolism: current status and principles for the development of novel evidence: a scientific statement from the American Heart Association. *Circulation*. 2019;140:e774–801.
  31. Ciampi-Dopazo JJ, Romeu-Prieto JM, Sánchez-Casado M, et al. Aspiration thrombectomy for treatment of acute massive and submassive pulmonary embolism: initial single-center prospective experience. *J Vasc Interv Radiol*. 2018;29:101–6.
  32. Kuo WT, Banerjee A, Kim PS, et al. Pulmonary embolism response to fragmentation, embolectomy, and catheter thrombolysis (PERFECT): initial results from a prospective multicenter registry. *Chest*. 2015;148:667–73.
  33. Kucher N, Boekstegers P, Müller OJ, et al. Randomized, controlled trial of ultrasound-assisted catheter-directed thrombolysis for acute intermediate-risk pulmonary embolism. *Circulation*. 2014;129:479–86.
  34. Piazza G, Hohlfelder B, Jaff MR, et al. A prospective, single-arm, multicenter trial of ultrasound-facilitated, catheter-directed, low-dose fibrinolysis for acute massive and submassive pulmonary embolism: the SEATTLE II study. *JACC Cardiovasc Interv*. 2015;8:1382–92.
  35. Tapson VF, Sterling K, Jones N, et al. A randomized trial of the optimum duration of acoustic pulse thrombolysis procedure in acute intermediate-risk pulmonary embolism: the OPTALYSE PE trial. *JACC Cardiovasc Interv*. 2018;11:1401–10.
  36. Tu T, Toma C, Tapson VF, et al. A prospective, single-arm, multicenter trial of catheter-directed mechanical thrombectomy for intermediate-risk acute pulmonary embolism: the FLARE study. *JACC Cardiovasc Interv*. 2019;12:859–69.
  37. Al-Hakim R, Bhatt A, Benenati JF. Continuous aspiration mechanical thrombectomy for the management of submassive pulmonary embolism: a single-center experience. *J Vasc Interv Radiol*. 2017;28:1348–52.
  38. Pieraccini M, Guerrini S, Laiolo E, et al. Acute massive and submassive pulmonary embolism: preliminary validation of aspiration mechanical thrombectomy in patients with contraindications to thrombolysis. *Cardiovasc Intervent Radiol*. 2018;41:1840–8.
  39. Araszkievicz A, Sławek-Szmyt S, Jankiewicz S, et al. Continuous aspiration thrombectomy in high- and intermediate-high-risk pulmonary embolism in real-world clinical practice. *J Interv Cardiol*. 2020;2020:4191079.
  40. Sista AK, Horowitz JM, Tapson VF, et al. Indigo aspiration system for treatment of pulmonary embolism: results of the EXTRACT-PE trial. *J Am Coll Cardiol Intv*. 2021;14:319–29.
  41. Azarian R, Wartski M, Collignon MA, et al. Lung perfusion scans and hemodynamics in acute and chronic pulmonary embolism. *J Nucl Med*. 1997;38:980–3.
  42. Ng AC, Chow V, Yong AS, et al. Prognostic impact of the Charlson comorbidity index on mortality following acute pulmonary embolism. *Respiration*. 2013;85:408–16.
  43. Al-Hakim R, Park J, Bansal A, et al. Early experience with angiovac aspiration in the pulmonary arteries. *J Vasc Interv Radiol*. 2016;27:730–4.
  44. Moriarty JM, Al-Hakim R, Bansal A, et al. Removal of caval and right atrial thrombi and masses using the angiovac device: initial operative experience. *J Vasc Interv Radiol*. 2016;27:1584–91.